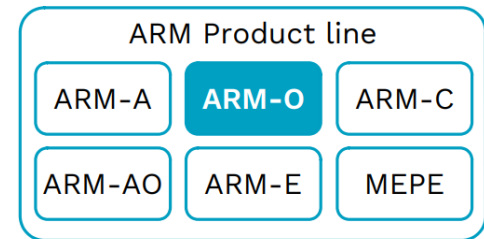


# DATASHEET | ARM-O

Aurora Resistojet Module – Orbit control



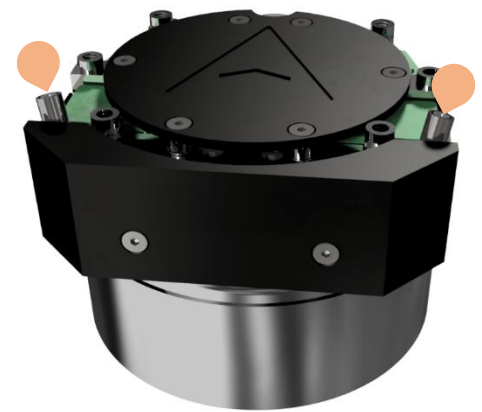
## ARM PRODUCT FAMILY

The ARM products provide an array of 1-12 individual water resistojet thrusters with a shared tank for a variety of use cases. The products are intended for any nano- and microsatellite sizes, with specific CubeSat form factor variants being developed for off-the-shelf delivery.

### ARM-O

The Aurora Resistojet Module for Orbit control is a CubeSat propulsion system utilizing water propellant. It features 2-4 thrusters, each aligned with the satellite centre-of-mass, allowing them to generate linear thrust with no rotational momentum whether used individually or together.

The use cases include orbital changes, station keeping, formation flying and collision avoidance.



*Render of the Small ARM-O with 2 thrusters*

## TECHNICAL SPECIFICATION

The below configurations are available without customization, but other configurations can also be built

	Small	Medium
Form	0.6 U	1 U
Total impulse	Up to 150 Ns	Up to 400 Ns
Wet mass	< 0.8 kg	< 1.1 kg
# of thrusters	2 or 4	
Control interface	Either direct electrical interface, or digital through RS-422 or CAN	
Power	5 W/mN	
Thrust vector	Thruster heads adjusted toward centre-of-mass	
Response time	Preheat 60 s, nominal mode 2 milliseconds	
Lead time	6-9 months	